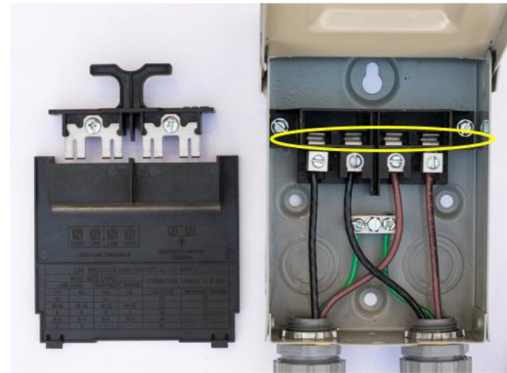
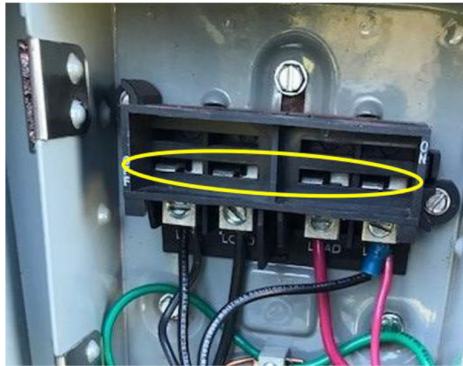
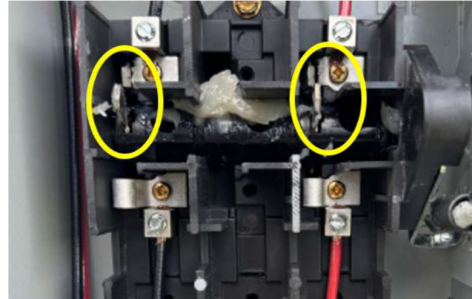
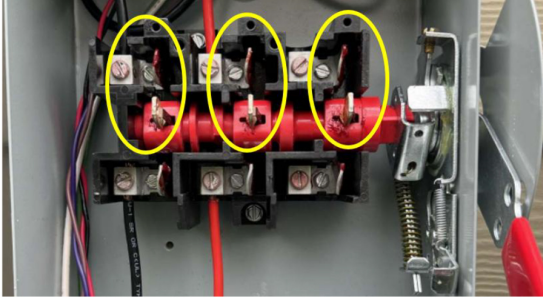
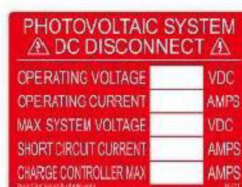
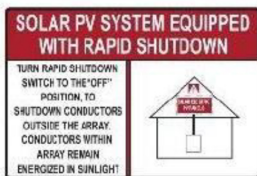


Acceptable Solar Disconnect Qualifications

- MUST be a lockable disconnect with a **visible point of opening**



- Labeled properly
 - If disconnect is not visible or not in close proximity to meter base, a label shall be placed on meter cabinet explaining solar disconnect location.
 - Examples of acceptable PV Labels:



- Round-the-clock, unobstructed access to the disconnect switch that can be easily located and accessed by the Cooperative.
- The disconnect must have lock out capability so that it can be locked in the “Off” or “Open” position.

Please note: REC does not allow any meter collars or devices that are not REC-approved to be installed on or within our meter base. Solar installers and other vendors are not authorized to install devices on REC meters or tamper with metering equipment.

Please see Virginia State code [here](#) for more information.

Examples of Approved Disconnects:



Definitions

Lockable	A device or feature that ensures that the equipment or system cannot be operated until the lock out device is removed.
Visible point of opening	An isolating distance in the current path where the open gap can be visually confirmed.