

Rising Costs, Supply Chain Barriers Present Challenges



REC NEWS

November 2022

REC Files Application for Rate Increase

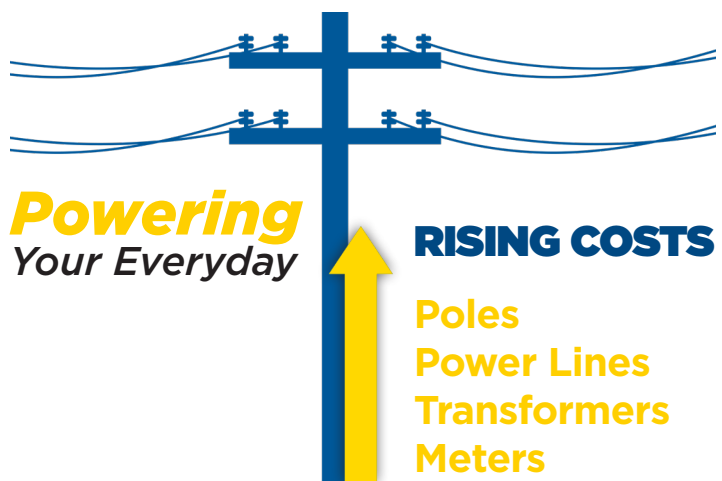
Like other businesses and families, Rappahannock Electric Cooperative (REC) has faced significant challenges related to inflation and supply chain barriers.

While your Cooperative works year-round to keep costs down, the expenses related to maintaining a reliable electric grid continue to increase.

In late October, REC filed an application with the Virginia State Corporation Commission seeking approval to increase the rate charged for distributing electricity by about 4% for residential member-owners. The new rate would be effective as of January 2023.

For an average residential member who uses about 1,350 kWh of electricity each month, a bill would increase by about \$7.78. The residential Access Charge is not changing. Many business, commercial and industrial members would see an increase of about 2%.

Effective January 2023, REC also is adjusting its line extension policy, setting a flat rate of \$2,500 toward construction required to connect a member to REC's system.



“This rate increase will allow REC to make critical investments in the grid and other needed equipment and technology,” said Casey Hollins, Managing Director—Communications and Public Relations. “We recognize the challenges faced by many member-owners, and **we are here to help.**”

Questions? Learn more about REC's rate application:
myrec.coop/2022rateapplication



REC Will Work with You!

Your Cooperative offers a variety of ways to assist members who are struggling to pay their electric bills. These include payment plans and other payment options.



Find additional helpful resources, including details on state and local assistance, at myrec.coop/heretohelp.

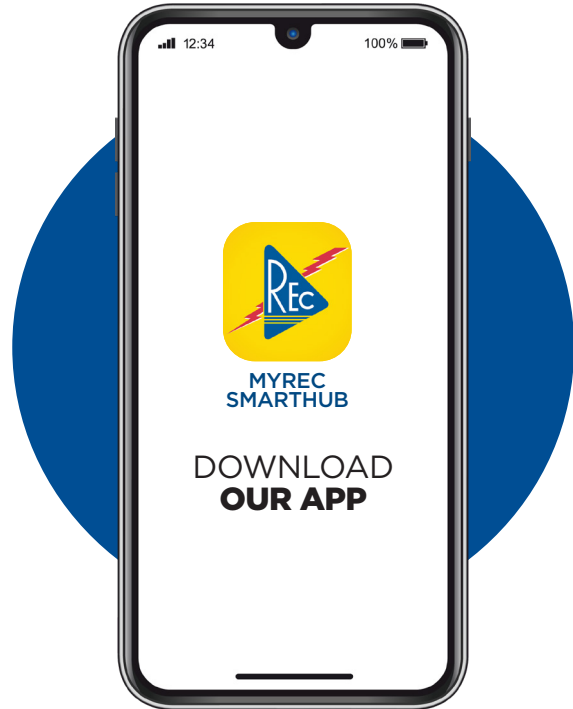
Take Control of **YOUR ENERGY USE**

Want to see what difference it makes to change your thermostat setting or reduce your time in the shower? With the My Usage tool you can:

- Track spikes in energy use.
- View hourly, daily, monthly and annual energy use.
- Compare energy use over time to make adjustments as needed.
- Access the Home Energy Calculator to find energy savings.

With My Usage, you can literally see the impact of each adjustment to your energy use. As you change your energy habits, watch the savings add up.

*Get started with My Usage today in MyREC SmartHub.
Visit myrec.smarthub.coop or download the app today!*



5 Easy Ways to Save on Your Electric Bill this Winter

With arctic blasts just around the corner, now is the time to prepare to keep the cold air outside where it belongs.

- 1** Have your **heating system serviced and performance-tested** to ensure it will run efficiently on winter's coldest days.
- 2** As temperatures start to drop, avoid the temptation to turn the thermostat up. Instead **set it to 68 degrees or the lowest comfortable setting**. At night, adjust it down a few more degrees. Increase it gradually back up to 68 during the day, by no more than 2 degrees at a time.
- 3** Space heaters are big energy hogs. Use sparingly. Instead, grab a hoodie and **reach for an extra blanket to stay warm**.
- 4** Make sure **windows and doors close tightly**. If you have drafty windows, use inexpensive window film kits to keep out drafts. Use caulk and weather-stripping to seal leaks around doors.
- 5** If you are not using a wood stove or fireplace, make sure you **close the damper** to reduce drafts.

Find even more helpful ways to save:
myrec.coop/save

